

Paradise Cove

Condo Hotel



Concept

Paradise Cove offers the ultimate tropical lifestyle for trendsetters and tastemakers who aspire to own a dream property only a short flight from the U.S. and Canada, yet seemingly a million miles away from the hectic pace of everyday life. From a chill vibe, endless sunshine and 80-degree seas to abundant outdoor activities, and an amazing array of dining options, **Paradise Cove** - which is only minutes away from the Huatulco international airport - puts your dreams and everything else within reach.

Condos in the **Paradise Cove** resort, each with ocean views, boast attention-to-detail and impeccable features, complemented by an array of indulgent amenities, including a spacious community social club with a fitness center, pools, meeting area, planned restaurant, bar, and more.



Community

The Full-Service Resort Condo Community of **Paradise Cove** is situated in Huatulco, Mexico on the southwest coast of Mexico in the state of Oaxaca. The community overlooks beautiful pristine ocean views.

All details at **Paradise Cove** are carefully considered to create a community for those with an appreciation of life's finer things, at a terrific value versus the Canada and the U.S. Whether you want to move to a dream location in an exotic, ocean-side setting, own an investment condo where you can get away from it all, purchase real estate as rental income, or a combination of the above, **Paradise Cove** is for you.



An aerial photograph of a coastline. The top half shows deep blue ocean water with a small boat leaving a white wake. The bottom half shows a sandy beach with shallow, clear turquoise water. A rocky cliffside is visible on the right side. The text 'OCEAN VIEW' is in a smaller font above the word 'condos' in a large, white, sans-serif font.

OCEAN VIEW
condos

Paradise Cove

Residence



88 condos

22 penthouses

22 buildings

Ocean
Views

GOLF pool bar
Security

Restaurant GYM SPA

Terrace POOLS

Stores

parking Gardens lounge

Pickleball court

Beach club BBQ



- 1 Access
- 2 Lobby
- 3 Parking
- 4 Pickleball Court
- 5 Golf Course
- 6 Multipurpose Building
- 7 Beach Club



NOTE:
The image is only a representation of the project.
The end result may vary.



Paradise Cove

Condo Hotel





W E L C O M E



E n j o y







P O O L



P o o l





B e a c h C l u b

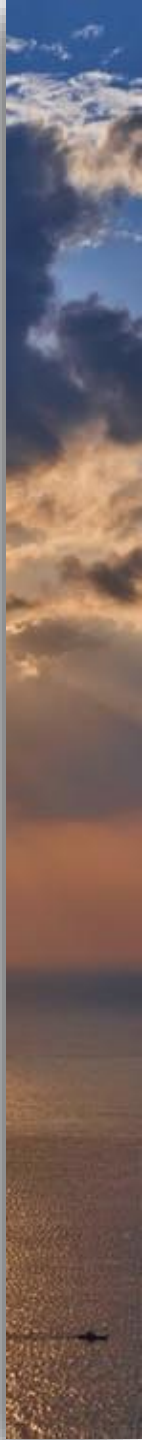


C o n d o





K i t c h e n





R o o m





P e n t h o u s e





L i v i n g R o o m

R o o m





Penthouse
Mezzanine





M e z z a n i n e



K i t c h e n

R o o m





Floor

Plans

OCEAN VIEW



Condo Type 1

INTERIOR: 1.378 sq.f. TERRACE: 237 sq.f.
INTERIOR: 128 m² TERRACE: 22 m²

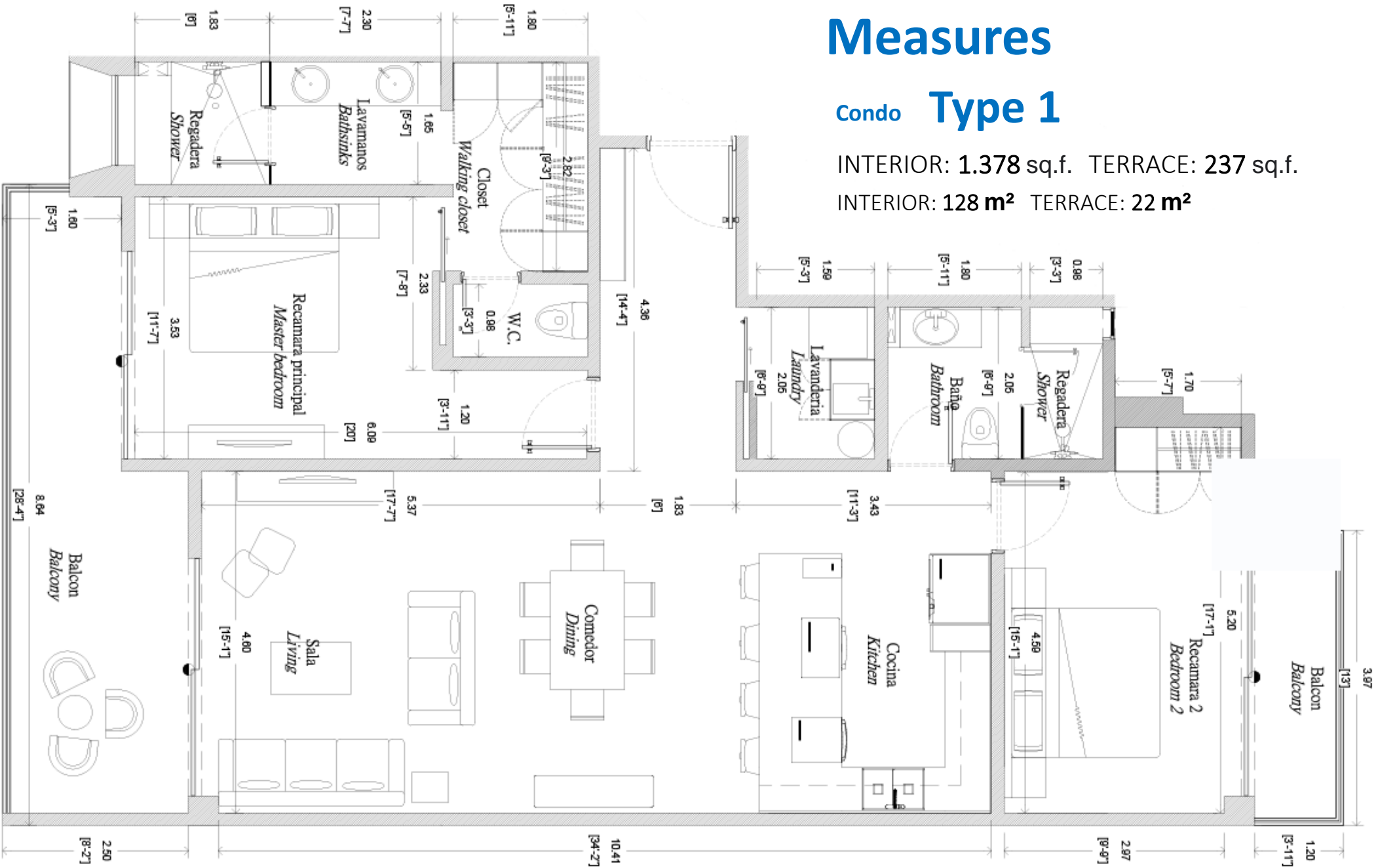


Measures

Condo Type 1

INTERIOR: 1.378 sq.f. TERRACE: 237 sq.f.

INTERIOR: 128 m² TERRACE: 22 m²



OCEAN VIEW



OCEAN VIEW

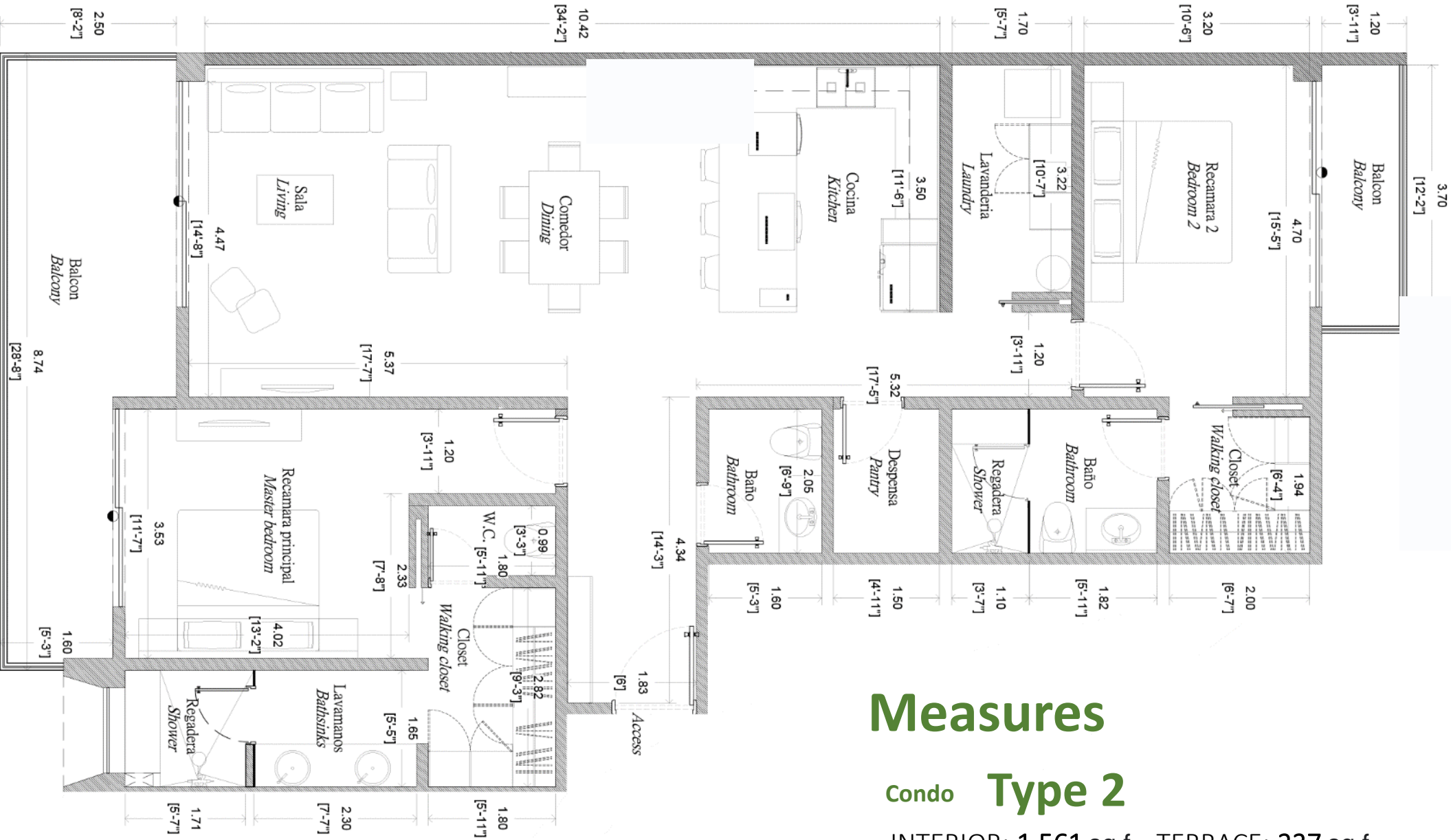


Condo **Type 2**

INTERIOR: 1.561 sq.f. TERRACE: 237 sq.f.

INTERIOR: 145 m² TERRACE: 22 m²





Measures

Condo Type 2

INTERIOR: 1.561 sq.f. TERRACE: 237 sq.f.
 INTERIOR: 145 m² TERRACE: 22 m²

OCEAN VIEW



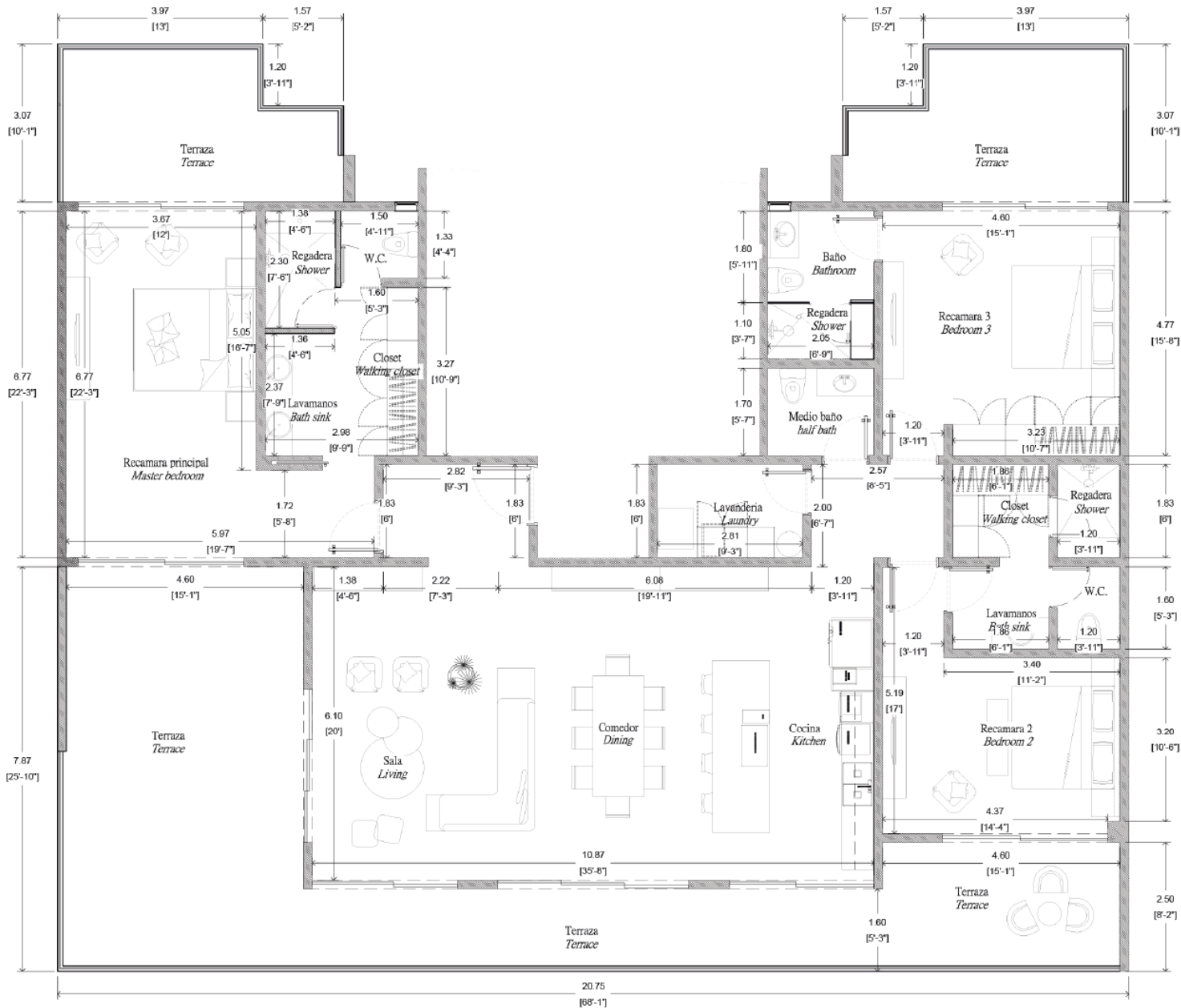


Condo
Type 3

INTERIOR: **1.561** sq.f. TERRACE: **237** sq.f.
INTERIOR: **209 m²** TERRACE: **97.50 m²**

OCEAN VIEW

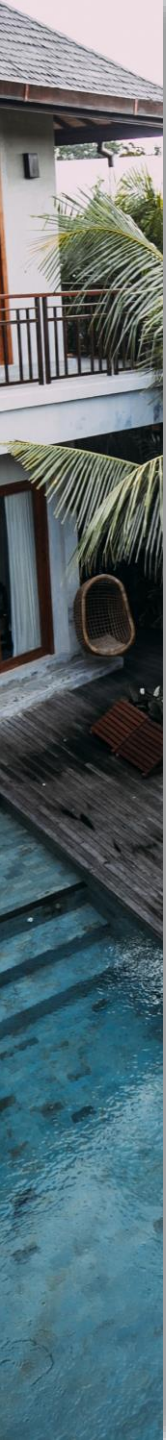




Measures Condo Type 3

INTERIOR: 1.561 sq.f. TERRACE: 237 sq.f.
 INTERIOR: 145 m² TERRACE: 22 m²





Penthouse

Type 1

INTERIOR: 2.250 sq.f.
TERRACE: 947 sq.f.

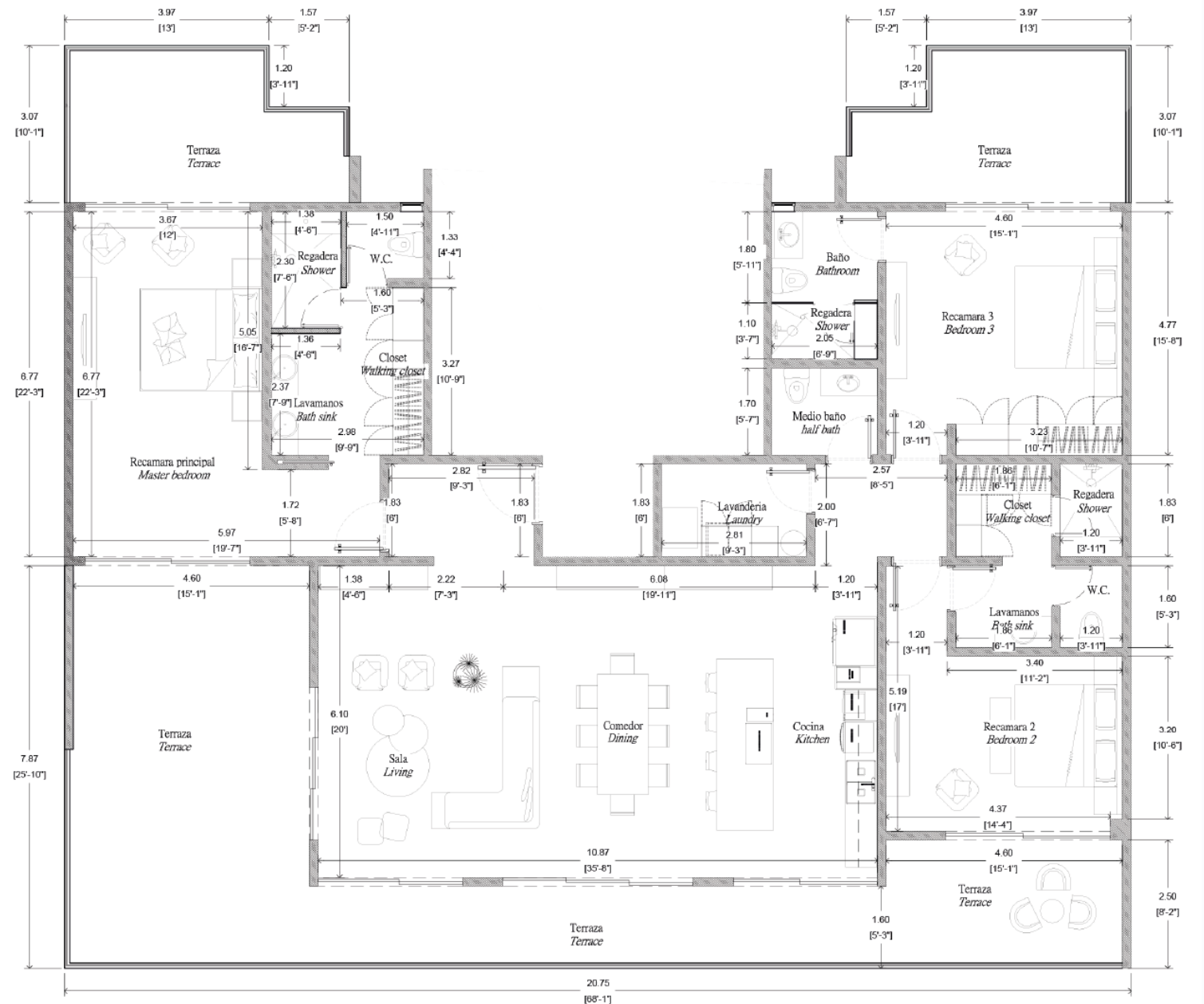
INTERIOR: 210 m²
TERRACE: 85 m²

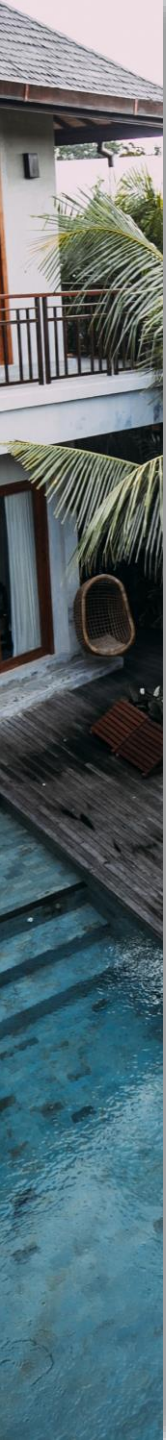




Measures Penthouse Type 1

INTERIOR: 2.250 sq.f.
TERRACE: 947 sq.f.
INTERIOR: 210 m²
TERRACE: 85 m²





Penthouse

Type 2

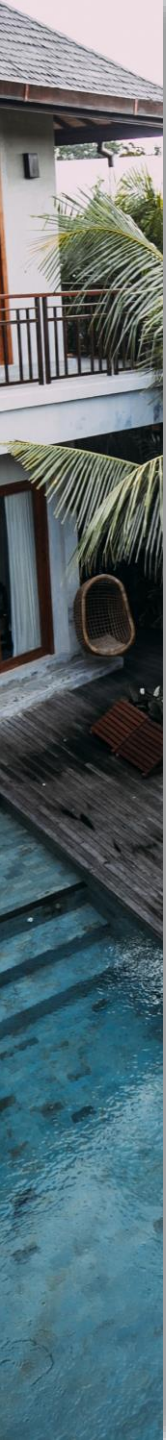
INTERIOR: 2.303 sq.f.

TERRACE: 1.259 sq.f.

INTERIOR: 214 m²

TERRACE: 117 m²





Penthouse

Type 3

Mezzanine Plus

INTERIOR: 2.519 sq.f.

TERRACE: 947 sq.f.

INTERIOR: 235 m²

TERRACE: 88 m²





Measures Penthouse

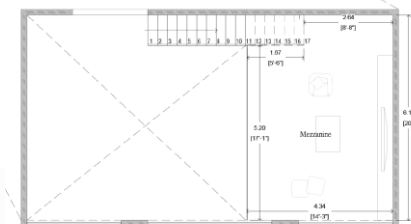
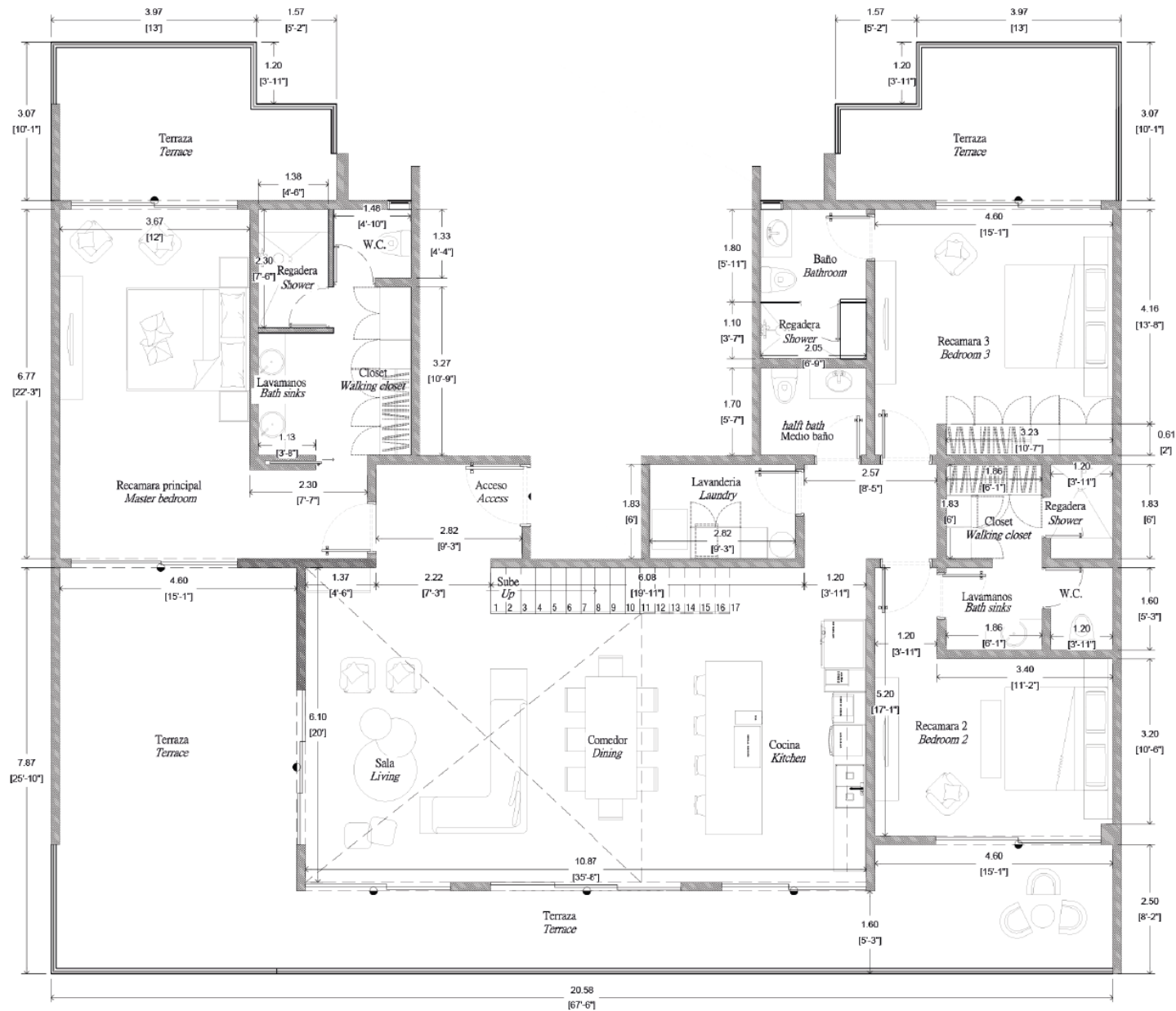
Type 3 Mezzanine Plus

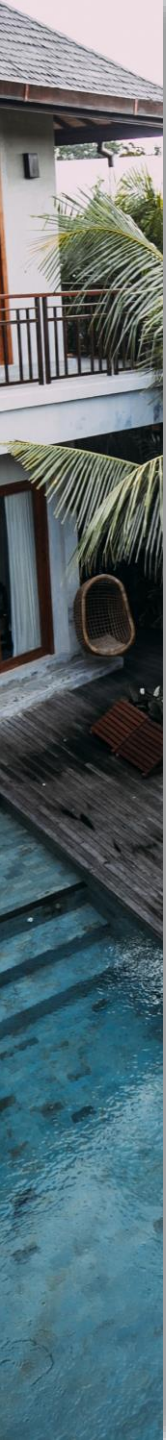
INTERIOR: 2.519 sq.f.

TERRACE: 947 sq.f.

INTERIOR: 235 m²

TERRACE: 85 m²





Penthouse

Type 4

Mezzanine Plus

INTERIOR: 2.573 sq.f.

TERRACE: 1259 sq.f.

INTERIOR: 239 m²

TERRACE: 117 m²



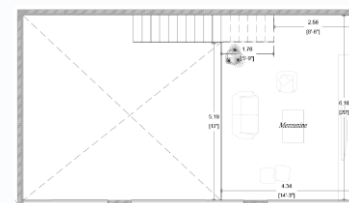


Measures Penthouse

Type 4 Mezzanine Plus

INTERIOR: 2.573 sq.f.
TERRACE: 1259 sq.f.

INTERIOR: 239 m²
TERRACE: 117 m²



Location

Coordinates



Huatulco International Airport

Conejos Bay

Crucecita Town

Tangolunda Bay

Chahue Bay

Santa Cruz Bay

Paradise Cove
Condo Hotel



© 2021 Google

© 2021 Google

© 2021 Google



Golf Course

Conejos Bay

Tangolunda Bay

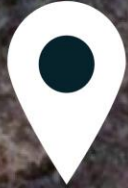
Crucecita Town

Chahue Bay

Santa Cruz Bay

Paradise Cove
Condo Hotel





Paradise Cove
Condo Hotel



Paradise Cove

Condo Hotel

